

Operating Instructions <Operator Guide>

CA Finder

Model No. **LB-ACF10N**

Thank you for purchasing this product.

This Operator Guide describes how to use the CA Finder.

- Please read these instructions carefully before using this product, and save this Operator Guide for future use.

■ Updating this app

Panasonic may release an upgrade version of this app in order to improve performance or add more new features. For more information about the upgrade version, please visit the support site below.
<http://panasonic.net/avc/archiver/lb-sc9/ca-finder>

For troubleshooting, refer to Troubleshooting guide. (⇒ 25)

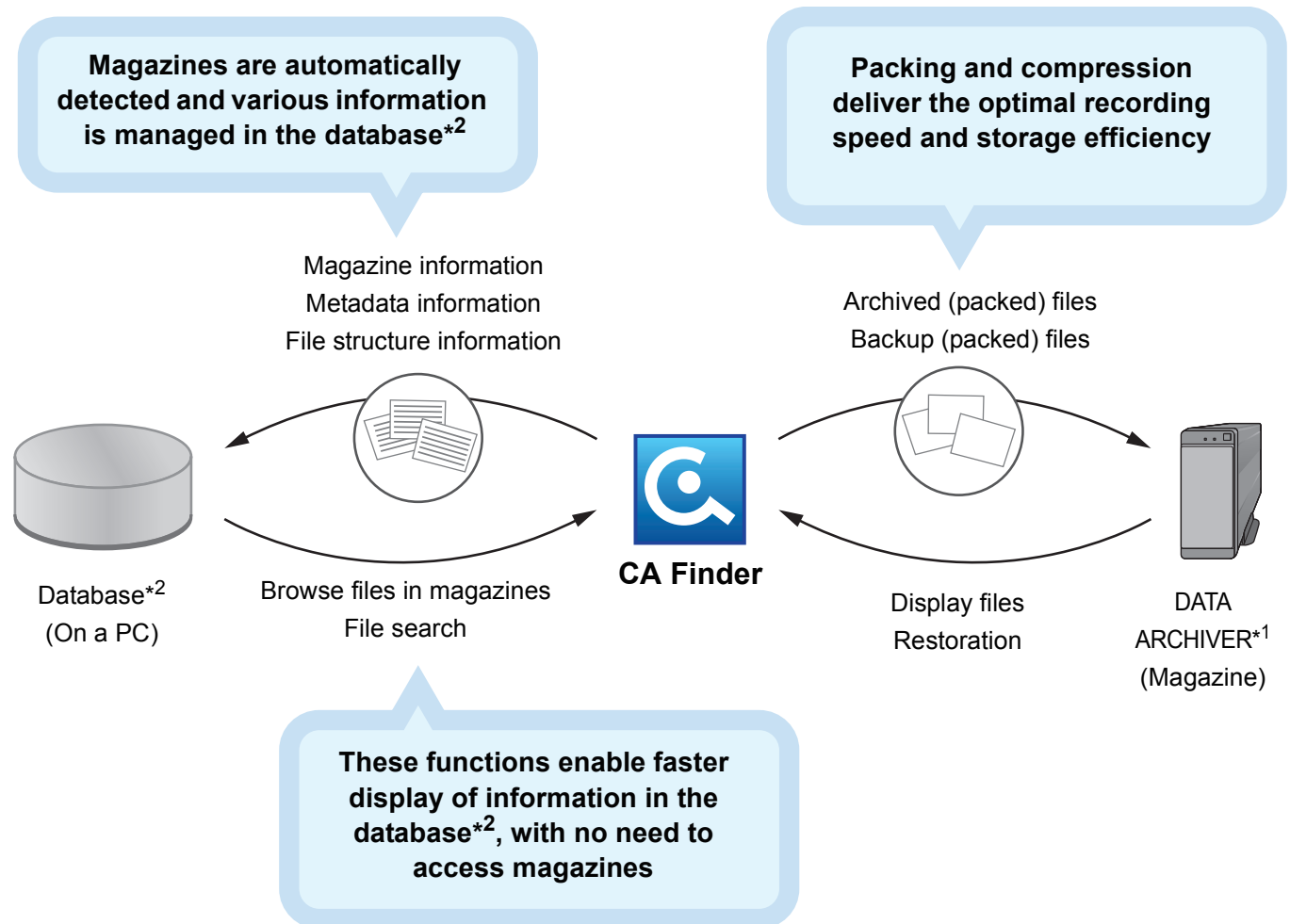
For the latest support information, please check the support site below.

<http://panasonic.net/avc/archiver/lb-sc9/ca-finder>

Features and Functions

Features

CA Finder is an integrated file management app specifically designed for the DATA ARCHIVER (LB-SC9)*¹. When archiving or a backup is in progress, CA Finder packs multiple files to record them. It also saves various relevant information to your database*² during archiving so that the information is displayed from the database*² when you browse or search for files.

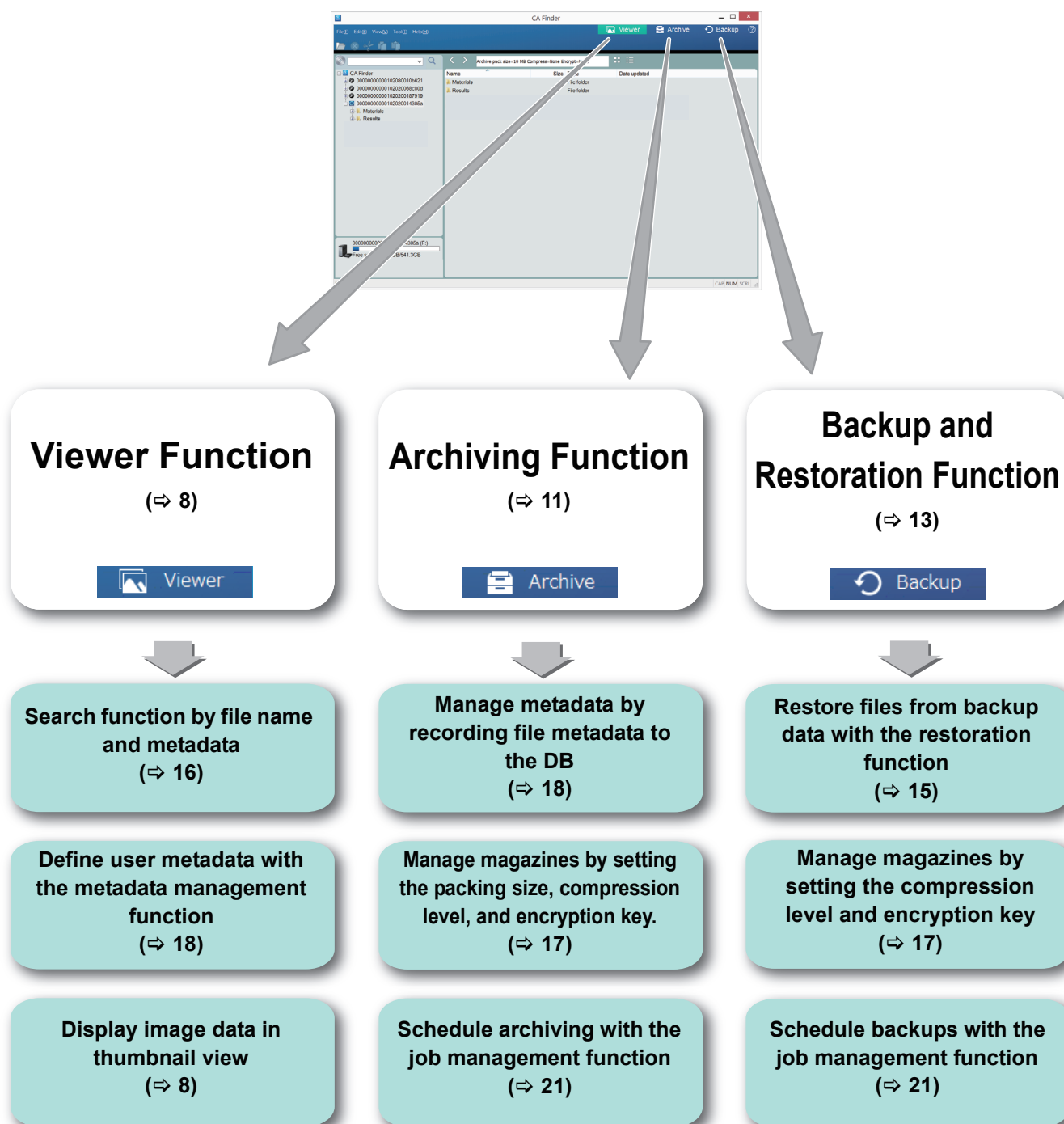


*¹ The DATA ARCHIVER (LB-SC9) is referred to as the CA (an abbreviation for Compact Archiver) hereafter.

*² The database is referred to as the DB hereafter.

Functions

This app offers the following functions for more convenient use of the CA:



DB Maintenance Tool is available as a supplementary function for this app.

DB Maintenance Function
(⇒ 22)



Synchronize with magazines with the DB maintenance function (⇒ 23)

Table of contents

Features and Functions	2
Features	2
Functions.....	3

Introduction

Before using this app	5
Disclaimer	5
Transferring or Discarding the PC and the medium	5
Operating environment	6
Installation of this app	7

Operations

Viewer Function	8
File viewer screen/File Viewer Function.....	8
Archiving Function	11
Archive screen	11
Archiving operations.....	12
Backup and Restoration Function	13
Backup and Restoration screens	13
Backup operations	14
Restoration operations	15
Search Function	16
Search by file name	16
Detailed search	16



Management Settings

Magazine Management Function	17
Magazine Management.....	17
Metadata Management Function	18
Defining metadata	18
Adding metadata and setting its item values.....	20
Job Management Function	21
Setting a job	21
DB Maintenance Tool	22

Others

Updating this app	24
Troubleshooting guide	25
Copyright	28
Glossary	29
Index	31

■ Illustrations and notations in this manual

- Please note that the figures, illustrations, and screenshots for the products in this Operating Instructions may differ slightly.
-  Return : Click to return to the previous view.
- Continued on the next page  : Description is continued on the next page. Click the button and read the next page.

Before using this app

Disclaimer

- To the extent permitted under the law, Panasonic assumes no responsibility whatsoever for any cost for direct or indirect damage and data loss resulting from use of this app or any other fault during/after the warranty period.
- The information contained in this manual is subject to change without notice.
- You are allowed to duplicate or modify the copyright work, such as various discs including music CDs, images and information on the Internet that is produced by using this app, under copyright law for limited personal or household use (hereinafter “Personal Use”).
- Except for personal use, any duplication or modification of the work without prior authorization of the copyright owners is prohibited by copyright laws. Also, the duplication of the works might be limited or prohibited according to the terms of the license agreements. Even if in terms of personal use, please follow the terms of the license agreements.

Transferring or Discarding the PC and the medium

When you wish to transfer or discard the PC that contains this app installed or the backup medium for the settings, we recommend reformatting the disc or physical destruction to prevent information leakage.

Operating environment

The PC to which this app is to be installed must meet the requirements below.

Check these requirements before installing this app.

Operating system	Windows® 10 (32 bit, 64 bit) Windows® 8, 8.1 (32 bit, 64 bit) Windows® 7 (32 bit, 64 bit)
CPU	x86 - 64-bit CPU 1.0 GHz or more
RAM	1.0 GB or more
Hard disc	500 MB or more (The DB size increases as the number of user files increases.)
Display	65536 colors or more, XGA resolution

(current as of October, 2015)

* Successful operation is not guaranteed on all PCs with the recommended operating environment above.

Installation of this app

Before installing this app, install the driver software for CA (the DVD supplied with CA).

- Before inserting the DVD, please close all other running applications.

Operation procedures are described according to Windows 8.1.

Preparation

Check your PC's operating environment.

- Please read the Operating Instructions for your PC and "Operating environment" (⇒ 6).

1 Turn on your PC.

- Log in as an administrator.

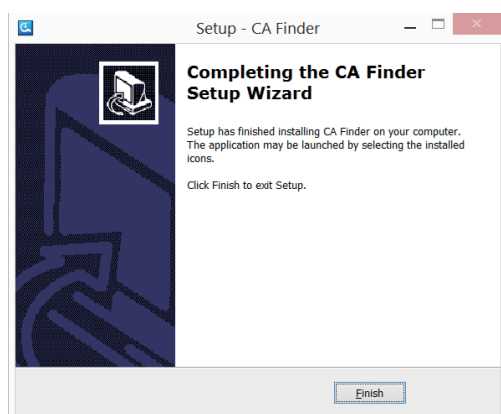
2 Connect the CA to your PC.

3 Insert the DVD into your PC.

4 Double-click "setup.exe" in the DVD.

5 Proceed with the installation according to the screen message.

- When the installation completes successfully, the following screen is displayed.



6 Click "Finish" to exit the program.

Starting up this app

Double-click "CA Finder" on the desktop.

Alternatively, select "CA Finder" from the Start menu.

- The magazine management screen (⇒ 17) will appear.*

* In certain situations, such as when this app detects a magazine that already contains files for the first time, a screen prompting you to synchronize the magazine with the DB will appear. Perform synchronization. (⇒ 23)

Deletion of this app

If you wish to uninstall this app, please follow these steps.

- Uninstalling this app will delete all information. When updating this app, if you want to keep contents in the DB, do not uninstall it.

1 Turn on your PC.

2 Select "Start" → "Control Panel" from the menu.

3 When the menu screen appears, click "Uninstall a program".

4 When the "Uninstall or change a program" screen appears, double-click "CA Finder X.X".

5 Proceed with the uninstallation according to the screen message.

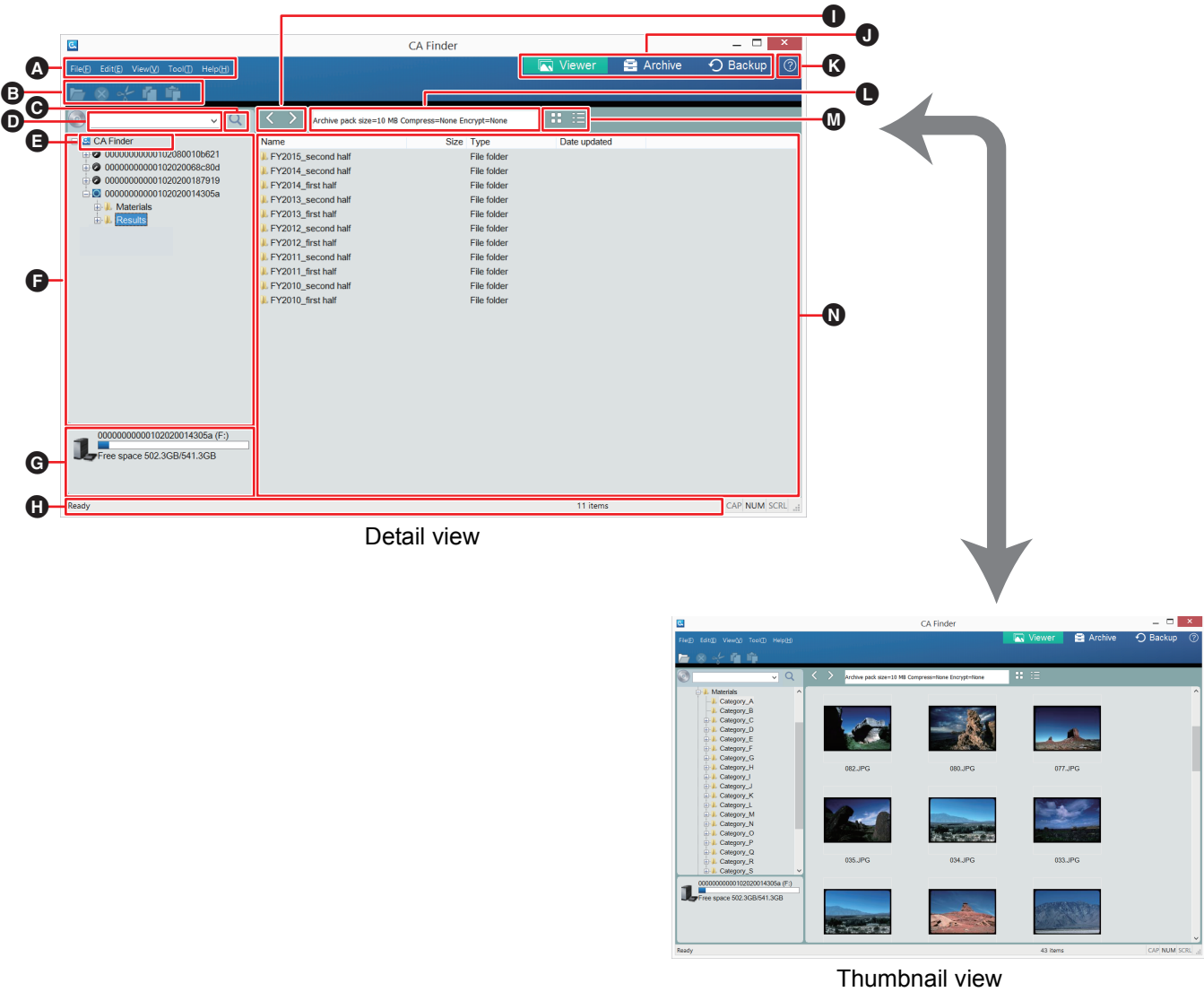


- You can change the language by selecting the following: "Tool" in (⇒ 8 - A) → "Options" → the "Language" tab.












Viewer Function

The file viewer screen appears when you start up this app.
CAs connected via USB are automatically detected and the contents saved to the DB using a function such as archiving appear.

File viewer screen/File Viewer Function



A	Menu	File:	Starts archiving, backup or restoration operation, or closes this app.
		Edit:	Cuts, copies, and pastes text.
		View:	Changes the display settings, such as the display mode and method.
		Tool:	Displays the magazine management screen, metadata management screen, job management screen, and option screen.
		Help:	Displays this manual and the version of this app.

B	Tool button	 : Opens a file.  : Deletes a folder.  : Cuts text.  : Copies text.  : Pastes text.
C	Search button	To perform a search, enter the desired character string to be searched for into D and click this button. (⇒ 16)
D	Search box	Enter the desired character string to be searched for. (⇒ 16) <ul style="list-style-type: none"> • The magazine or folder selected in the magazine tree will be searched. • Pulling down this box allows you to select “Detailed search”. (⇒ 16)
E	Root directory	This is the root of this app. <ul style="list-style-type: none"> • Clicking this item displays the list of magazines that store information in the DB in N.
F	Magazine tree	Magazine numbers and their file trees saved in the DB are displayed. <ul style="list-style-type: none">  : The magazine is currently loaded.  : The magazine is currently loaded, but write-protection is enabled.  : The magazine is currently not loaded. • The following operations can be selected with a right-click: <ul style="list-style-type: none"> “Delete the Magazine”: Deletes the selected magazine from the DB. “Delete the Folder”: Deletes the selected folder from the DB and magazine. • You can change the font and font size by selecting the following: <ul style="list-style-type: none"> “Tool” in A → “Options” → the “Font” tab.
G	CA connection information	The CAs connected via USB (up to 4 units) and their remaining free space sizes of the loaded magazines are displayed. <ul style="list-style-type: none"> • The following operations can be selected with a right-click: <ul style="list-style-type: none"> “Eject”: Ejects the magazine from the CA. “Format”: Formats the BD-RE magazine (Recorded contents are initialized, and the magazine is automatically ejected). “Release Write Protect”: Enables recording if recording to the magazine is disabled due to, for example, an error.
H	Status	The status of this app is displayed.
I	Previous/Next buttons	The page you displayed immediately before the file/magazine list appears.
J	Display mode selector buttons	<div>  Viewer : Displays the file viewer screen. (⇒ 8) </div> <div>  Archive : Displays the archive screen. (⇒ 11) </div> <div>  Backup : Displays the backup and restoration screen. (⇒ 13) </div>
K	Help view	This manual appears.
L	Archive setting information	The archive settings of the magazine selected in F or N are displayed. (⇒ 17)
M	Thumbnail/detail view selector buttons	Switch between the thumbnail and detail views.

N	File/magazine list	<p>The contents of the location specified in F are displayed.</p> <p>Clicking E displays the list of magazines that have been loaded before and whose information has been saved to the DB.</p> <ul style="list-style-type: none">• Double-click the name or thumbnail of a file to access the magazine and open the file.• Select “Delete the Folder” with a right-click to delete the selected folder.• Right-clicking an empty space (without selecting any folder) allows you to select “Create New Folder” and create a new folder.• You can change the font and font size by selecting the following: “Tool” in A → “Options” → the “Font” tab.
----------	---------------------------	---



- Files in formats other than BMP, JPG, GIF, TIF, and PNG cannot be displayed in thumbnail view.



Archiving Function

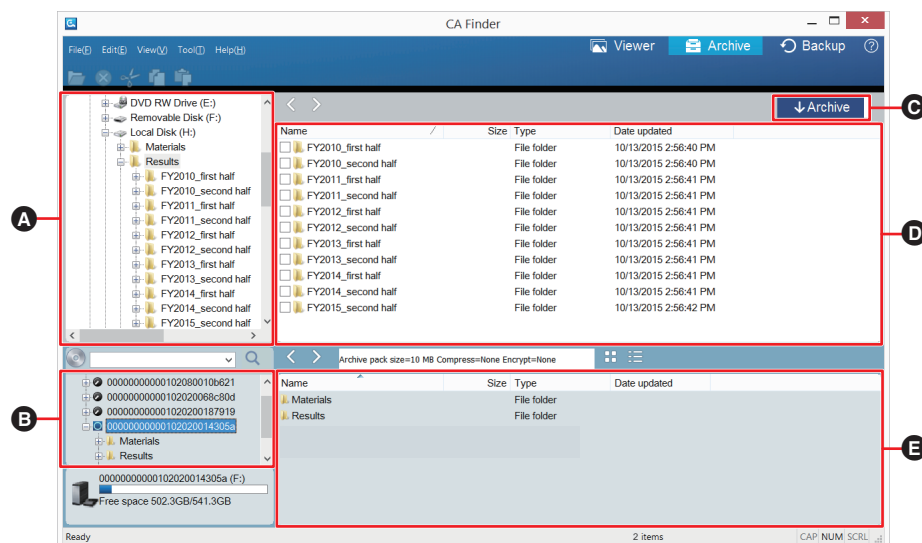
Archive files to magazines.

The archive function packs and compresses multiple files before recording, delivering the optimal recording speed and storage efficiency.

File structure data and metadata are saved to the DB while archiving is in progress so that the file search function is enabled.

Archive screen

Click “  Archive ” (⇒ 8 - .



A	Archive source tree	Specify the location of the archive source folder.
B	Archive destination tree	Specify the location of the archive destination magazine.
C	Archive start button	Perform archiving.
D	Archive source list	The contents of the folder specified in A are displayed. <ul style="list-style-type: none"> Mark the checkbox for the archive source folder.
E	Archive destination list	The contents of the magazine or folder specified in B are displayed. <ul style="list-style-type: none"> Specify the location to be archived.



- For the descriptions of items that are also displayed in the file viewer screen, refer to “File viewer screen/File Viewer Function” (⇒ 8).

Archiving operations

[Operate the archive screen (⇒ 11)]

- 1 Select the archive source folder in **A** and **D**.
- 2 Specify the archive destination in **B** and **E**.
- 3 Click **C**.
- 4 Click “Yes”.
 - To cancel the archiving operation, click “Cancel” on the progress bar screen.
- 5 Click “OK”.

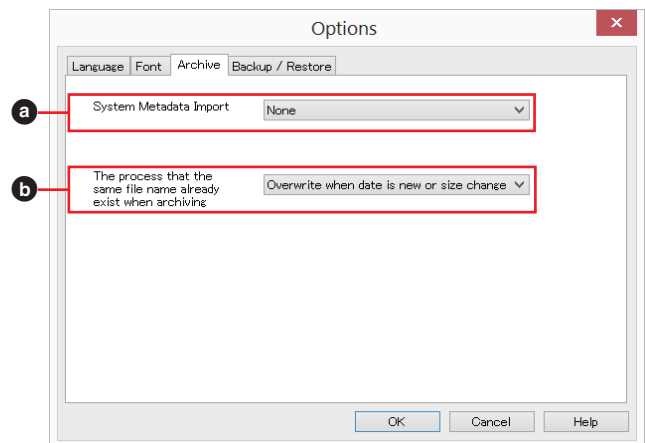
■ To set details on archive packing, such as the packing size and compression level (⇒ 17)

■ To schedule archiving (⇒ 21)

■ Import setting for system metadata

- System metadata are not imported to the DB by default.
- Importing system metadata increases the DB size according to the number of files.

- ① Select “Options” in “Tool” (⇒ 8 - **A**).
- ② Open the “Archive” tab.
- ③ Select the desired setting in “System Metadata Import” (**a**).
- ④ Click “OK”.



■ When there is a file with the same name as the one being archived

- By default, if the last modified date is changed to a more recent date, or if there is a change in size, the existing file will be overwritten.
- ① Select “Options” in “Tool” (⇒ 8 - **A**).
 - ② Open the “Archive” tab.
 - ③ Select the desired setting in “The process that the same file name already exist when archiving” (**b**).
 - ④ Click “OK”.



- If the magazine runs out of free space while archiving is in progress, the archiving operation will stop. Replace the magazine with one that has free space.
- Do not use the archive source folder or file when the archive is executed.

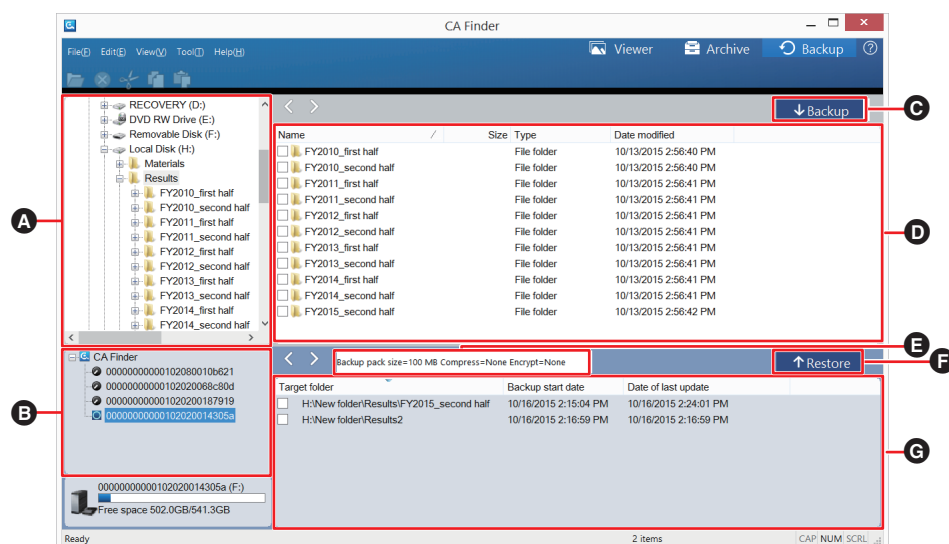
Backup and Restoration Function

Back up files to magazines so that they can be restored in case the original user data files should be damaged, for example. The archive function packs and compresses multiple files before recording, delivering the optimal recording speed and storage efficiency.

It is possible to restore files using just the backup files recorded to magazines, without relying on the DB.

Backup and Restoration screens

Click “  Backup ” (⇒ 8 - ①).



①	Backup source tree	Specify the location of the backup source folder.
②	Backup destination tree	Specify the location of the backup destination magazine.
③	Backup start button	Perform a backup.
④	Backup source list	The contents of the folder specified in ① are displayed. <ul style="list-style-type: none"> Mark the checkbox for the backup source folder.
⑤	Backup setting information	The backup setup of the magazine selected in ② or ⑦ is displayed. (⇒ 17) <ul style="list-style-type: none"> The setting for “Backup pack size” is fixed.
⑥	Restoration start button	Perform restoration.
⑦	Backup folder list	The contents of the magazine specified in ② are displayed. <ul style="list-style-type: none"> When performing restoration, mark the checkbox for the folder to be restored.



• For the descriptions of items that are also displayed in the file viewer screen, refer to “File viewer screen/File Viewer Function” (⇒ 8).

Backup operations

[Operate the backup and restoration screen (⇒ 13)]

- 1 Select a backup source folder in **A** and **D**.
- 2 Specify the backup destination in **B**.
- 3 Click **C**.
- 4 Click “Yes”.
 - To cancel the backup operation, click “Cancel” on the progress bar screen.
- 5 Click “OK”.

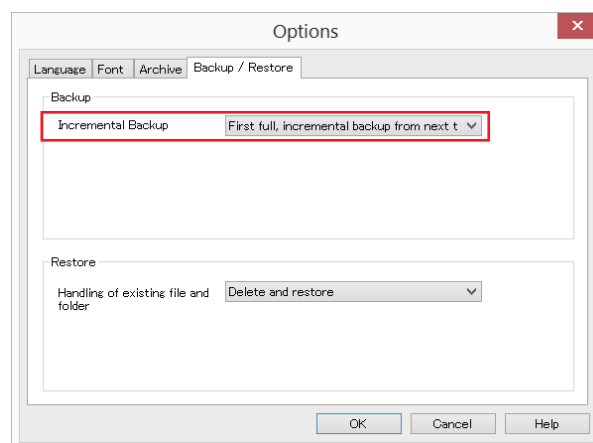
■ To set the compression level for packing (⇒ 17)

■ To schedule a backup (⇒ 21)

■ To set the backup method from the second time onwards

- By default incremental backups are performed from the second time onwards.

- ① Select “Options” in “Tool” (⇒ 8 - **A**).
- ② Open the “Backup / Restore” tab.
- ③ Select the desired setting in “Incremental Backup”.
- ④ Click “OK”.

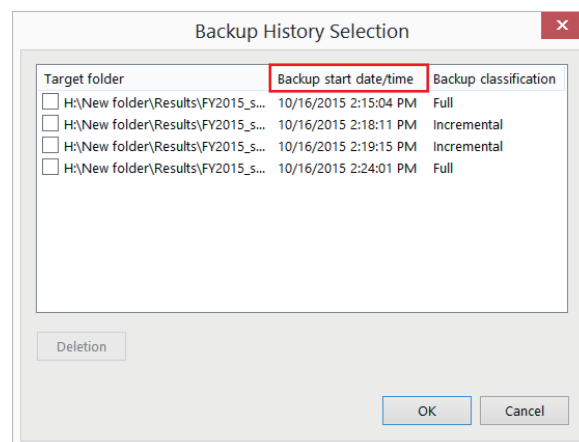


- The backup function is not available for system files.
- If the magazine runs out of free space while a backup is in progress, the backup operation will stop. Replace the magazine with one that has free space.
- Each time a backup is performed, the existing file will be overwritten.
- Files that are locked for exclusive use by other apps cannot be backed up.
- Do not use the backup source folder or file when the backup is executed.

Restoration operations

[Operate the backup and restoration screen (⇒ 13)]

- 1 Select the folder to be restored in **(A)**.
- 2 Click **(F)**.
- 3 Check “Backup start date/time”, and mark the checkbox for the desired folder.
 - If a “Incremental” folder is selected, restoration will use all the back up files up to the “Full” backup immediately preceding the selected folder.
- 4 Click “OK”.
- 5 Click “Yes”.
 - The folder will be restored in the location where it was backed up.
 - To cancel the restoration operation, click “Cancel” on the progress bar screen.
- 6 Click “OK”.



■ To delete backup histories

Delete backup histories manually after formatting a magazine or if there are unnecessary backup histories. (Backup files recorded to magazines are not deleted.)

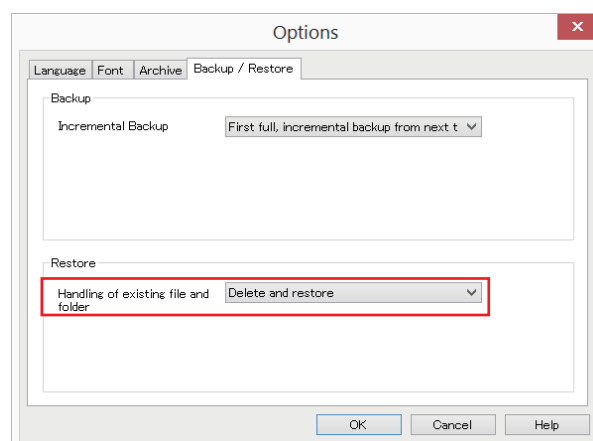
[Operate the step 3 screen in “Restoration operations” (above)]

- “Incremental” folders cannot be selected. Selecting a “Full” folder will also delete all the relevant “Incremental” backup folders.
- ① Click “Deletion”.
 - ② Click “Yes”.
 - ③ Click “OK”.

■ To set the way in which the existing file or folder is handled when restoration is performed

- By default the existing file or folder will be deleted when restoration is performed.

- ① Select “Options” in “Tool” (⇒ 8 - **(A)**).
- ② Open the “Backup / Restore” tab.
- ③ Select the desired setting in “Handling of existing file and folder”.
- ④ Click “OK”.



Search Function

Search for files and folders.

Since the search function searches the DB, it searches through all the files archived with this app.

Search by file name

Search files and folders by name.

- 1 Specify the search location in the magazine tree (⇒ 8 - **F**).
- 2 Enter the desired character string to be searched for into the search box (⇒ 8 - **D**).
 - Enter a character string that partially matches the desired file name including extension.
- 3 Press [Enter] key or click the search button (⇒ 8 - **C**).
 - Search results will appear in the file/magazine list (⇒ 8 - **N**).
 - Double-click to open the file or folder.

Detailed search

Search for files by metadata (item value) and date (modified or created date).

- 1 Specify the search location in the magazine tree (⇒ 8 - **F**).
- 2 Pull down the search box (⇒ 8 - **D**), and select “Detailed search”.

[Searching by either “Metadata Search” or “Date/Time Search”]

- 3 Mark the checkbox “Metadata Search” (**a**) or “Date/Time Search” (**d**).
- 4 Set the items in **b** or **e**.
- 5 Click “OK”.

[Searching by both “Metadata Search” and “Date/Time Search”]

- 3 Mark the checkboxes “Metadata Search” (**a**) and “Date/Time Search” (**d**).
- 4 Set the items in **b** and **e**.
- 5 Select **c**.
 - AND**: Searches for items that meet the conditions of both **b** and **e**.
 - OR**: Searches for items that meet the conditions of either **b** or **e**.
- 6 Click “OK”.
 - Search results will appear in the file/magazine list (⇒ 8 - **N**).
 - Double-click to open the file.

The screenshot shows the 'Detailed search' dialog box with the following elements and annotations:

- a**: Points to the 'Metadata Search' checkbox, which is checked.
- b**: Points to the 'Search Item 1' section, which includes a dropdown menu set to 'Design number' and a text input field containing '100001'.
- c**: Points to the logical operator selection area, where 'AND' is selected over 'OR'.
- d**: Points to the 'Date/Time Search' checkbox, which is unchecked.
- e**: Points to the 'Search Item 3' section, which includes a dropdown menu set to 'Beginning date of design', a date input field showing '9/30/2015', and a date range input field showing '10/13/2015'.

Other visible elements include 'Search Item 2' with 'Architect' and 'Taro Matsushita', and 'OK' and 'Cancel' buttons at the bottom.

Magazine Management Function

Manage magazines detected by this app in the DB by setting information on each of them, such as a magazine name and packing method.

Even when files are recorded separately into multiple magazines, their file structure data will be stored and managed in the DB.

Magazine Management

If information on the loaded magazines is not stored in the DB, the magazine management screen will appear. Set information for each magazine.

[To change settings]

Right-click a magazine number in the magazine list (⇒ 8 - **N**), and select “Property”.

Alternatively, click “Tool” (⇒ 8 - **A**), and select “Magazine Management”.

1 Enter a name into “Magazine name” (**a**).

2 Set the items in **b** as necessary.

Archive pack size: Archive packing size

Compress: Compression level (The higher the compression level is, the longer the compression time will become.)

Encrypt: If you select “AES256”, a password entry screen will appear. Choose and enter a password which consists of between 8 and 32 ASCII printable characters.

3 Click “OK”.

Magazine number	000000000001 0202001 4305a
Magazine name	
Status	Loaded
Archive pack size	10MB
Compress	None
Encrypt	None
Total space	581,196,578,816 Byte
Used space	42,217,314,304 Byte
Free space	538,979,264,512 Byte
Storage medium	Rewritable 600GB

It is possible to change the settings for “Archive pack size” and “Compress”.

Selecting “AES256” for “Encrypt” and setting a password will make it impossible to cancel the encryption and change the password.

Make a note of your password in case you forget it, and keep it in a secure location.

(Your password is confidential information, so keep and handle it with great care.)

Metadata Management Function

This app allows you to freely define user metadata and its item values.

Adding user-defined metadata to files and setting its item values (⇒ 20) enable file search using the item values of that metadata.

Defining metadata

Define user metadata and its items.

1 Click “Tool” (⇒ 8 - **A**), and select “Metadata Management”.

2 Enter a metadata name into “Name” (**b**), and click “Add” (**c**).

- Metadata will be created. (Unlimited)

3 Click “Edit Item...” (**f**).

4 Enter a metadata item name into “Name” (**h**), and set **i** as necessary.

Input required: Requires that you enter a value when adding metadata to the file.

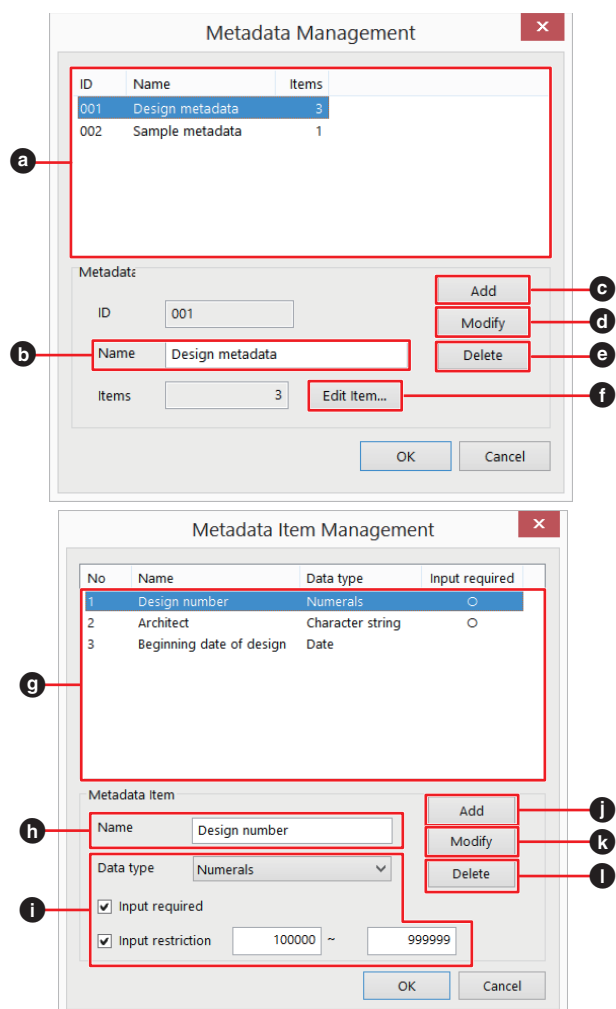
Input restriction: Sets the range of values that can be entered (maximum and minimum). (Appears only when “Numerals” is selected for “Data type”).

5 Click “Add” (**j**).

- A metadata item will be created. (Up to 32 items)

6 Click “OK”.

7 Click “OK”.



[Examples of metadata definitions] (To use at an architecture firm)

Metadata name (b)	Metadata item name (h)	Data type (i)	Input required (i)	Input restriction (i)	Item value (⇒ 20 - b)
Design metadata	Design number	Numerals	Required	100000 ~ 999999	100001
	Architect	Character string	Required	—	Taro Matsushita
	Beginning date of design	Date	—	—	09/30/2015
Sample metadata	Type of design	Character string	Required	—	New building
					Renovation

■ To rename metadata

- Metadata that is already added to files is also updated.

- ① Select the metadata to be renamed in **(a)**. (⇒ 18)
- ② Enter a metadata name into “Name” **(b)**.
- ③ Click “Modify” **(d)**.
- ④ Click “OK”.

■ To delete metadata

- Metadata that is already added to files is also deleted.

- ① Select the metadata to be deleted in **(a)**. (⇒ 18)
- ② Click “Delete” **(e)**.
- ③ Click “OK”.
- ④ Click “OK”.

■ To change metadata item settings

- Metadata that is already added to files is also updated.

- ① Select the item to be changed the settings in **(g)**. (⇒ 18)
- ② Set “Name” **(h)** or **(i)**.
- ③ Click “Modify” **(k)**.
- ④ Click “OK”.

■ To delete metadata items

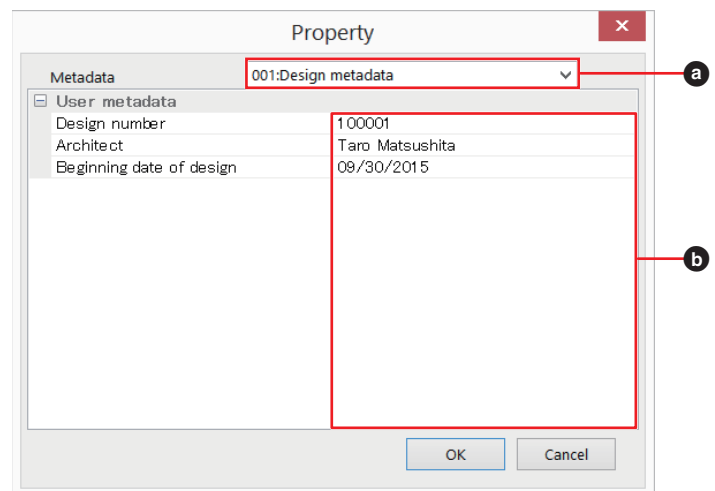
- Metadata that is already added to files is also updated.

- ① Select the item to be deleted in **(g)**. (⇒ 18)
- ② Click “Delete” **(l)**.
- ③ Click “OK”.
- ④ Click “OK”.

Adding metadata and setting its item values

Add metadata to files recorded to magazines and set its item values.

- 1 **Right-click a file in the file list (⇒ 8 - N), and select “Property”.**
 - Selecting “Property” with multiple files selected allows you to set their settings at once.
- 2 **Select a metadata in **a**.**
- 3 **Enter values into **b**.**
 - If “Metadata Item” is set to “Input required”, be sure to enter a value. (⇒ 18)
- 4 **Click “OK”.**
- 5 **Click “OK”.**



- Setting an item value is required for using “Metadata Search”. (⇒ 16)

Job Management Function

When setting the job, the task is registered in the Task Scheduler, which is a Windows management feature. This enables the archive or backup to be executed automatically at the time specified in the Task Scheduler.

- Combining multiple jobs allows you to perform an effective and efficient backup.

[Backup scheduling example]

Job 1: Full backup every Sunday

Job 2: Incremental backup every Monday through Saturday

Setting a job

- Click "Tool" (⇒ 8 - **A**), and select "Job Management".
- Enter a job name into "Name" (**e**), and set the items in **f**.
 - Set "Output" to a location in the magazine.
- Click "Add" (**b**).
 - A job will be added.
- Click "OK".
- Click "Yes".
- Enter the "User name" and "Password" for Windows, and click "OK".

The screenshot shows the 'Job Management' dialog box. It has a table at the top with columns: Name, Schedule, Status, and Results of last execution. Below the table are three buttons: Add, Delete, and Abort. Below these buttons are several input fields: Name, Results, Function (Full backup), Schedule (Every week), a date and time picker (9/24/2015 19:55), checkboxes for days of the week (Mon, Tue, Wed, Thu, Fri, Sat, Sun), Object Folder (H:\Results\FY2015_second half), and Output (F:\). At the bottom are OK and Cancel buttons. Red boxes and letters a-f point to specific elements: 'a' points to the table, 'b' to the Add button, 'c' to the Delete button, 'd' to the Abort button, 'e' to the Name field, and 'f' to the Function and Schedule fields.

■ To delete a job

- When you delete a job, the task in the Task Scheduler is also deleted.

- Select the job to be deleted in **a**.
- Click "Delete" (**c**).
- Click "Yes".
- Click "OK".

■ To cancel a job

- Select the job to be canceled in **a**.
- Click "Abort" (**d**).
- Click "Yes".
- Click "OK".



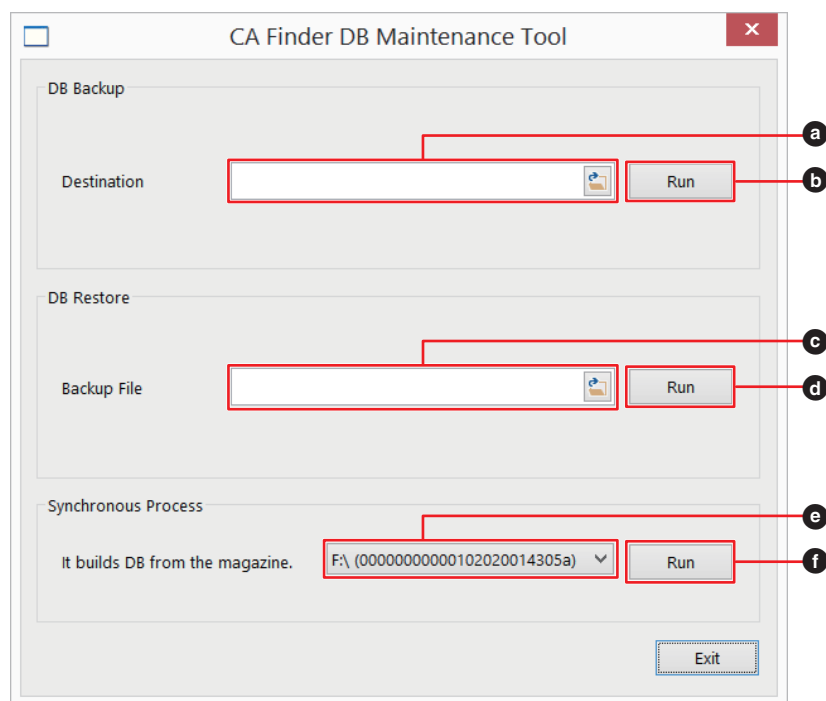
- It is not possible to perform multiple jobs at overlapping times. Schedule jobs with enough time between them.

DB Maintenance Tool

Perform DB maintenance with DB Maintenance Tool (an app separate from CA Finder).

It is possible to back up or restore the DB, or synchronize data recorded to a magazine with the DB.

Select “ DB Maintenance Tool” from the Start menu.



■ Backing up the DB

Back up the DB.

- It is possible to specify the desired backup location.
- ① Specify the backup destination in **(a)**, and enter a file name.
 - ② Click “Save”.
 - ③ Click “Run” **(b)**.
 - ④ Click “Yes”.
 - ⑤ Click “OK”.
 - ⑥ Click “Exit”.

■ Restoring the DB



If the DB should be damaged, restore it using its backup files.

- ① Select the file to be restored in **(c)**.
- ② Click “Open”.
- ③ Click “Run” **(d)**.
- ④ Click “Yes”.
- ⑤ Click “OK”.
- ⑥ Click “Exit”.

■ Synchronizing files recorded to magazines with the DB

When using a magazine that already contains files recorded before the introduction of CA Finder, synchronize information in the DB with the contents in the magazine so that you can also display and search for them. In addition, even when the DB is damaged without a backup DB, magazine contents can be synchronized with the DB.

- Metadata and magazine management information stored in the DB must be set again.

- ① Select the CA in .
- ② Click “Run” (.
- ③ Click “OK”.
- ④ Click “Exit”.



- While thumbnails are managed as reduced versions of image data in the DB, the corresponding data in a magazine is read for synchronization. As a result, it takes some time to perform synchronization.
- It is recommended that you periodically back up the DB.

Updating this app

Panasonic occasionally releases updates for this app to improve performance and add new features.

Download the latest installer for this app from our support site below, and follow the necessary steps to complete an update.

<http://panasonic.net/avc/archiver/lb-sc9/ca-finder>

Troubleshooting guide

Check the following items to try to resolve the problem.

If the problem remains unresolved, consult your dealer for instructions.

Startup

Problem	Cause/Solutions
○ General	
An error message appears and this app does not start up.	→ The Visual C++ redistributable package for Visual Studio 2013 may not be installed correctly. Reinstall the app. → DLLs that make up this app may be missing. Reinstall this app.
The on-screen displays of various functions are grayed out.	→ The CA is not detected. Connect it via USB.
The CA drive is not displayed.	→ The CA may not be connected correctly via USB. Connect it correctly. → The USB port may be damaged. Connect to a different USB port and check to see if the problem is fixed. → This app does not work correctly unless the CA is in use.
Magazines are not displayed.	→ Load a magazine. → If magazines that used to be displayed are no longer displayed, the DB may be damaged. If you have a backup DB made with the DB Maintenance Tool, you can restore the magazines by restoring the DB. (⇒ 22)

Operations

Problem	Cause/Solutions
○ Archiving	
Cannot perform archiving.	→ Specify the archive source folder. (⇒ 12) → Select an archive destination magazine or a folder. (⇒ 12) → Once a folder is archived, it cannot be archived unless changes are made to its contents.
○ Backup	
Cannot perform a backup.	→ Specify the backup source folder. (⇒ 14) → Select a backup destination folder. (⇒ 14) → Once a folder is backed up, it cannot be backed up unless changes are made to its contents.
○ Restoration	
Cannot perform restoration.	→ Specify the restoration source folder. (⇒ 15)
○ Search	
Cannot find any search results.	→ Since the search function searches through information stored in the DB, search results cannot be returned if the DB has no relevant information. (⇒ 23) → Files or folders that match the search conditions may not exist. Set appropriate search conditions. (⇒ 16)
Search takes too long.	→ The time required for a search increases as the amount of data increases.
○ Job management	
Archiving or a backup is not performed even after the specified time has passed.	→ The system timer of the PC may not be working correctly. Check its settings. → Check to see if the Task Scheduler is enabled.

Others

Problem	Cause/Solutions
○ General	
I have forgotten the encryption password.	→ There is no solution to this problem, but if you are using a BD-RE magazine, all of its data can be deleted by formatting it.
Even after a folder is deleted, the amount of free space on the magazine remains unchanged, or the amount of space used on the magazine increases.	→ Even when a folder is deleted from a BD-R or BD-RE magazine, only the link information of the data, rather than the actual data, is deleted. Additional management information may be written to the magazine. In this case, the amount of magazine space used may increase. If you are using a BD-RE magazine, all of its data can be deleted by formatting it.
○ Display of Error or Warning	
An error or warning from Data ARCHIVER Driver Software is displayed.	→ Check the list of error codes or list of warning codes in the DATA ARCHIVER (LB-SC9) Operating Instructions <Operator Guide>.

Copyright

- Microsoft and Windows are trademarks or registered trademarks of Microsoft Corporation in the United States and other countries.
- Microsoft product screen shot(s) reprinted with permission from Microsoft Corporation.
- Other names mentioned in these instructions, including those of corporations and products, may be the registered trademarks or trademarks of the corporations concerned. Some TM and [®] marks are omitted from the text.

This product incorporates the following software:

- (1) the software developed independently by or for Panasonic Corporation,
- (2) the software licensed under the GNU LESSER General Public License, Version 2.1 (LGPL V2.1),
- (3) open source software other than the software licensed under the LGPL V2.1.

The software categorized as (2), (3) are distributed in the hope that it will be useful, but WITHOUT ANY WARRANTY, without even the implied warranty of MERCHANTABILITY or FITNESS FOR A PARTICULAR PURPOSE. Please refer to the detailed terms and conditions contained in the text file (File Name: OSS_license.txt) under the installation folder of this product.

At least three (3) years from delivery of this product, Panasonic will give to any third party who contacts us at the contact information provided below, for a charge no more than our cost of physically performing source code distribution, a complete machine-readable copy of the corresponding source code covered under LGPL V2.1 or the other licenses with the obligation to do so, as well as the respective copyright notice thereof.

Contact Information:

oss-cd-request@gg.jp.panasonic.com

Glossary

Archive attribute

As one of Windows file properties, this attribute is set for files mainly to assign backup information to them. When a file is created or modified, Windows enables the archive attribute.

When a file is backed up, this app clears its archive attribute to indicate that it is backed up.

Archiving

To move data to a designated storage area for its long-term storage. Recording is typically performed on write-once media.

In this app, archiving refers to the recording of files to a magazine. Various relevant information is saved to the DB at the same time as archiving so that you can search for the files after the relevant information is saved.

Backup

To create a copy of data to restore the data in the event of a failure. Recording is typically performed on rewritable media.

With this app, a folder and contents under it are compressed and saved to a magazine with a full or incremental backup operation.

DB (Database)

A collection of certain types of data that is managed for easier reuse of data.

With this app, information that identifies the way in which each file is packed and recorded to a magazine with an archiving operation as well as magazine and metadata management information are saved to the DB. In addition, a search index will be created and saved to the DB at the same time as archiving. Use of the DB enables faster display of the file viewer screen and faster file search time, with no need to access magazines. It is recommended that you periodically back up the DB for this app with DB Maintenance Tool, which is specially designed for the DB.

Full backup

To back up all target files regardless of their archive attribute.

Incremental backup

To back up only the files that were created or modified by examining the archive attribute setting.

With incremental backup, reductions in data size and recording time can be expected.

Magazine number

A 24-digit alphanumeric identifying a magazine.

With this app, any desired magazine name can be added to the DB for each magazine number.

Metadata

Information about a file that comes with the file.

This app handles two types of data: system metadata, which is predefined by the system, and user metadata, which can be defined freely by the user. It is possible to search for files using registered metadata item values as keywords.

Packing

To group multiple files into a single unit to record them to an optical disc when they are saved to a magazine. One characteristic of optical discs is that the recording speed slows down when a large number of files that are relatively small in size is being recorded. Packing can minimize this characteristic.

Restoration

To restore damaged data by writing back a copy of data that was created in advance.

This app restores files by combining full backups under the selected folder with incremental backups of these full backups.

System metadata

Information to be displayed in the details tab of Windows properties.

With this app, system metadata are saved to the DB at the same time as archiving when the import setting for system metadata is enabled.

Task Scheduler

A Windows function that automatically performs specified tasks at specified times.

This app automatically performs archiving and a backup using this function.

User metadata

Unique metadata defined and added by the user.

This app allows you to define metadata, add it to files, and register item values so that you can search for them using the item values as keywords.

Index

A	Archiving 11, 29	T	Thumbnail view 8
B	Backup 13, 29	U	Uninstall 7
C	Compression 17	U	Updating 24
D	DB (Database) 22, 29	V	Viewer 8
E	Encryption 17		
F	Full backup 21, 29		
I	Incremental backup 14, 29		
	Installation 7		
J	Job 21		
M	Magazine management 17		
	Metadata 18, 20, 29		
P	Packing 17, 29		
	Packing size 17		
R	Restoration 13, 29		
S	Search 16		

Panasonic Corporation
Kadoma, Osaka, Japan

© Panasonic Corporation 2015

SQW0612
F1015HA0